

# ST PAUL COLLECTION

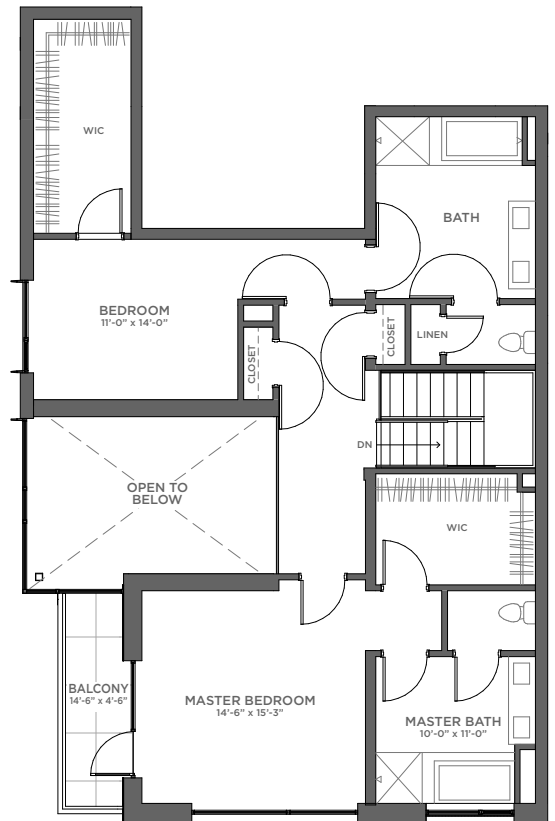
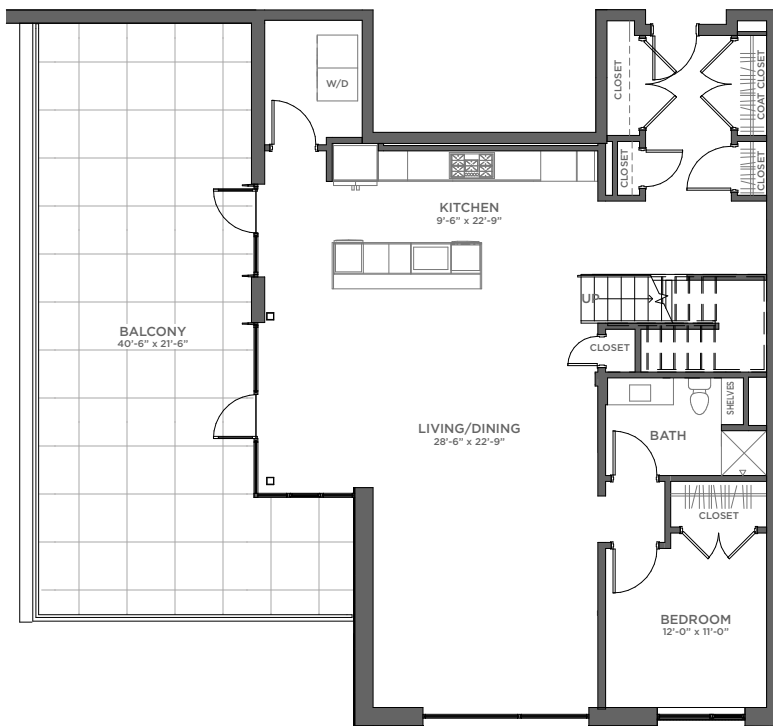
CHERRY CREEK NORTH

## 3 BR II - TWO STORY

BUILDING NO. 255 // 3 BEDROOM // 3 BATH // 2,787 SQ. FT.

PRICE: \_\_\_\_\_ MOVE-IN DATE: \_\_\_\_\_

### FIRST FLOOR



### SECOND FLOOR